



Welcome!

At **Bethany Home**, we strive to create the most enjoyable retirement living experience possible. We deliver quality and value in every service we provide and work to maintain and improve the living environment in a compassionate Christian atmosphere. **Bethany Home** Association offers the confidence of over 100 years of senior living experience and serves all varieties of resident needs.

A photograph of the Bethany Home building, a large, multi-story brick structure with a covered entrance. In the foreground, there is a sign that reads "BETHANY HOME". The image is slightly faded and overlaid with a decorative blue and purple wavy line.

*Celebrating life's journey
together in God's love.*

Located in Lindsborg, Kansas, the home is a social ministry of the Central States Synod of the Evangelical Lutheran Church of America. The campus includes a 100-bed skilled nursing facility, 20 assisted living apartments and 49 independent living units. **Bethany Home** Association has a mission of creating a positive Christian environment and delivering Christ-centered care to all residents and guests. Bethany Home has a long and storied history with many changes and a dedication to serving the people of Lindsborg and the surrounding communities.

Whether you, or a loved one, are seeking independent housing options, assisted living services rehabilitation, short or long-term care, **Bethany Home** can help! We understand the difficulty in the decisions you and your family face and will help you plan the best individualized care for your loved one.

The health care center currently holds a four-star rating by the federal Center for Medicare & Medicaid Services and is endorsed by the U.S. Department of Veterans Affairs.

321 N. Chestnut • Lindsborg, KS 67456
Phone 785-227-2334 • Fax 785-227-3138
www.bethanyhome.com

Bethany Home

The Bethany Home Association of Lindsborg, Kansas is first and foremost a Christian Home with a Christ centered atmosphere. The basic philosophy of Bethany Home is to continue the Christian Ministry of caring as done by our Lord and Master, Jesus Christ.

MISSION STATEMENT

Celebrating life's journey together in God's love.

VISION STATEMENT

Bethany Home is a vibrant, inclusive community where individuals receive the support needed to thrive and reach the highest level of independence attainable in a compassionate Christian environment. Highly trained, caring professionals provide peace of mind through thoughtful, personalized service and care, embracing innovation, forward thinking stewardship, and market-leading practices.

APPLICATION POLICY

An application for admission to Independent Living, Assisted Living and/or the long-term care center must be completed and returned to Bethany Home, accompanied by a **\$35.00 per person** non-refundable check. The applicant is encouraged to have a personal meeting and/or tour of the facilities. The Admissions Committee will review the application, with priority placement according to level of need or in order of the date on the application.

ADMISSIONS POLICY

An admission fee will be charged at the time of admission to assisted living or long-term care to cover costs for individual record and room preparation. Bethany Home's admission fee varies depending on the resident's payment source.

Once accepted for admission to assisted living or long-term care, residents and/or their families may request a face to face meeting prior to the admission date. Payments for room, board and personal care begin on the date of admission and are payable one month in advance. The payment period runs on a calendar month.

Should the resident be discharged and return to the facility within 12 months, this fee will not be charged again. If the resident is discharged and returns to the facility after 12 months, an admission fee will apply.

Admission fees will not be charged due to a change in the resident's level of care. For example: A resident moving from assisted living to long-term healthcare will not be charged another admission fee.

Contact Information

Bethany Home Association

321 N. Chestnut
Lindsborg, KS 67456

785-227-2334

Ext.

Kris Erickson

111

CEO

Patricia Roraback

110

Office Manager

Stephaney Scott

121

Dietary Manager

Bethany Home Kitchen

Dining Reservations

785-227-2846

Thomas Nichols

123

Activity Director

Delwin Koons

125

Maintenance

Andrea Johnson

126

Human Resources

Phil Hett

133

Interim Chaplain

Anne Anderson

140

Social Services, Admissions

Jennifer Cantrell

142

Marketing Director

Marilyn Spohn

146

Billing/Independent Living

Sara Anderson

159

Director of Nursing

Wendy Johnson

182

Skilled Services

Bethany Home Assisted Living

785-227-8331

Skylar Hanson, RN Operator

Independent Living

Bethany Home Independent Living Cottages and Duplexes offer comfort and security in a retirement community without the hassles of home maintenance. Single and multi-bedroom units are available and include a fully furnished kitchen, handicap accessible bathrooms, and laundry facilities. Income based rent includes city water and sewer service, grounds keeping, maintenance and weekly trash pick-up.



Bethany Home Duplexes:

2 Bedroom w/unfinished basement

3 Bedroom w/finished basement

Includes: Rent, grounds keeping, maintenance

Tenant is responsible for city water/sewer/
electricity/trash service, cable TV, phone, etc.

(Call for pricing)

Cottage Apartments:

Approximately 600 Square Feet

Income based rent (Call for pricing)

Includes: Rent, water, city, sewer, grounds
keeping, maintenance, trash service

Tenant is responsible for electricity, cable TV,
phone, etc.

- All Independent Living tenants are welcome and encouraged to take part in all activities at Bethany Home
- Meals are available in the Bethany Home Dining Hall at a minimal cost
- Cottage apartments are furnished with stoves, refrigerators, garbage disposals, carpeting in bedrooms and living areas; vinyl flooring in kitchen and bathrooms
- The Cottage Activity Center is available to all renters for activities or get-togethers and may be reserved for no cost
- Laundry Room facilities are available adjacent to the Cottages; hookups for washer and dryers are available in duplexes and select cottage apartments
- Applicants must be 62 years old or an individual with a handicap or disability, regardless of age



Contact Marilyn Spohn for more information

321 N. Chestnut • Lindsborg, KS 67456

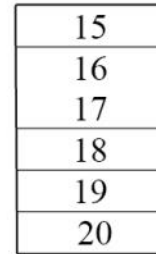
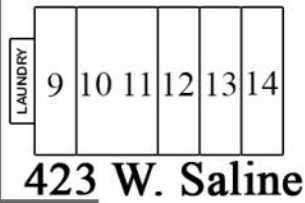
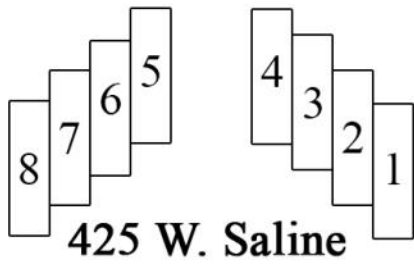
Phone 785-227-2334 • Fax 785-227-3138

www.bethanyhome.com

BETHANY HOME

BETHANY HOME INDEPENDENT LIVING

W. SALINE STREET



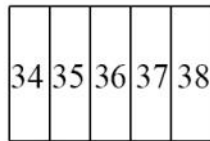
PARKING

PARKING

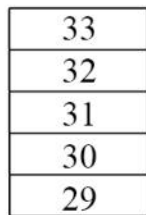
COTTAGE LANE



408 W. State

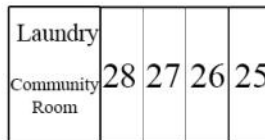


406 W. State



PRIVATE
HOMES
& PROPERTY

404 W. State



402 W. State



PARKING

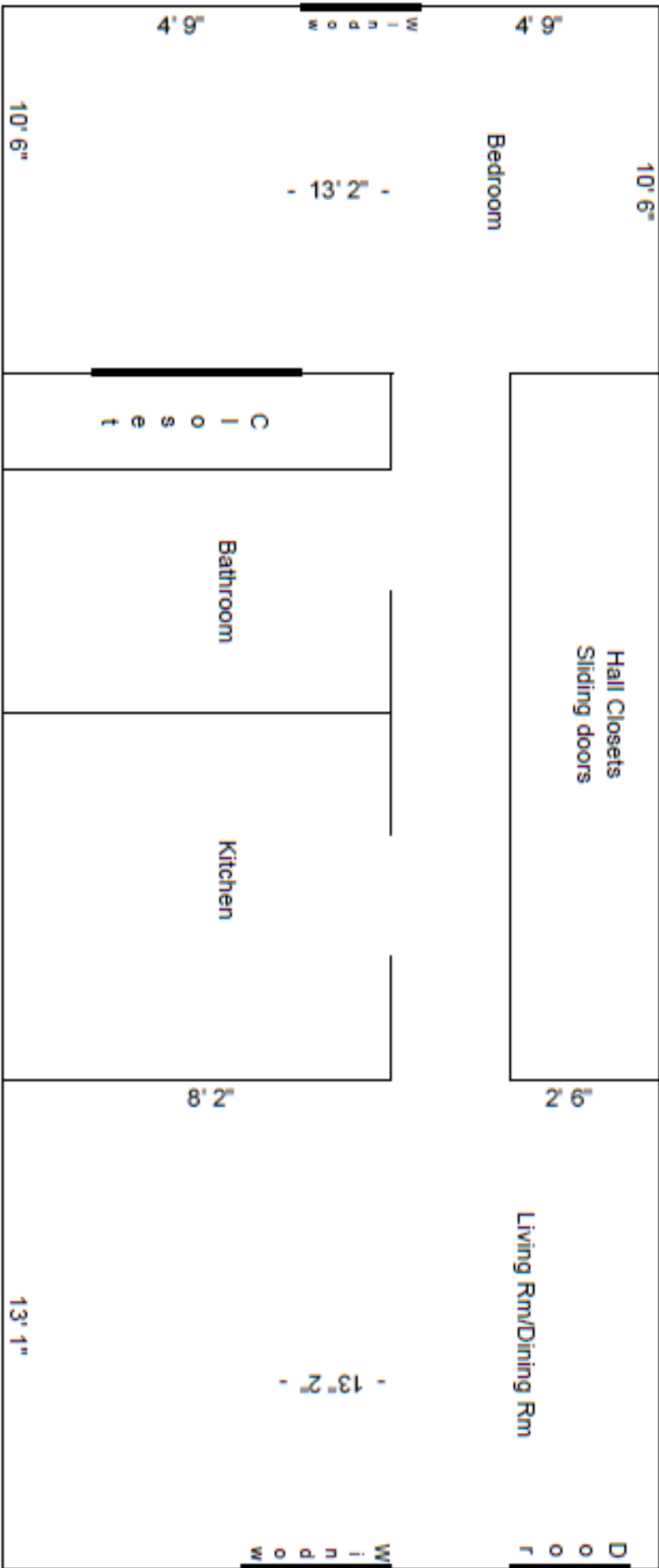
PARKING

STATE STREET

CHESTNUT STREET



Map may not be to scale



Measurements are approximate

Map may not be to scale